

SHARP

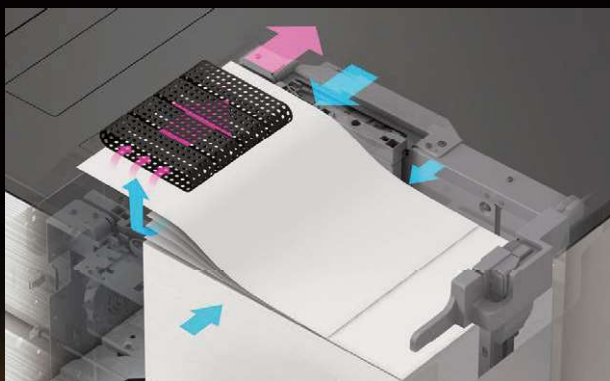
MX-M1206 MX-M1056

Digital Multifunction System

High-volume Document Performance You Can Trust



Built to Excel in the Print-on-demand Workplace



Enhanced Reliability

The MFP is built for durability and easy maintenance. It features smart built-in systems and options that prevent paper mis-feeds and improve paper travel. These help to minimise downtime and improve productivity.

Heavy workloads are no problem. This MFP gives you a consistently high level of print quality, even with high-speed, large-volume jobs.



High Productivity

The MFP's print engine handles large-volume jobs with ease. It offers outstanding productivity, thanks to its large paper capacity, high-speed DSPF, and handy finishing options. You can also pair the MFP with a Fiery® print server for industry-leading print management.

When you need to print a business proposal or strategy paper right now, this MFP gets the job done fast.



Is your enterprise calling out for a quality document solution to handle high-volume light production duties? Sharp's new MFP answers the call. This powerful MFP comes with a wide range of configurable options that you can tailor to your needs. Whatever set-up you choose, you'll get ultra-crisp B/W documents printed at 120/105 ppm. Duplex scanning and smart paper-feeding technology keep production flowing smoothly. And single sign-on gives you easy access to a variety of cloud services. If you're working in a critical print-on-demand environment, this is a powerful document solution you can trust.



Smooth Operation

Thanks to its large 15.4-inch LCD control panel and user-friendly UI, this MFP is easy and intuitive to operate. Features like the optional QWERTY keyboard and touch pad put powerful functionality in the hands of every office user.

Anyone on your team—even newcomers—can operate the MFP in no time and take advantage of its advanced features.



Easy Connection

Use single sign-on for easy access to a variety of cloud services. You can directly print data stored in the cloud or upload scanned data there for later printing. The MFP also supports a popular mobile printing technology.

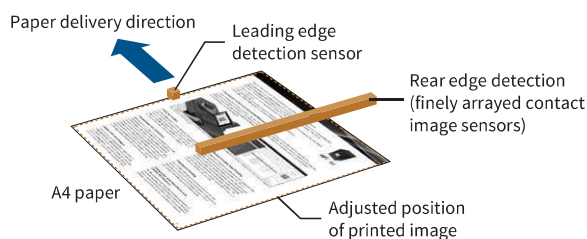
Large files stored on a server or in the cloud—or data uploaded to a mobile device—can be printed out on the spot.



High Reliability and Quality

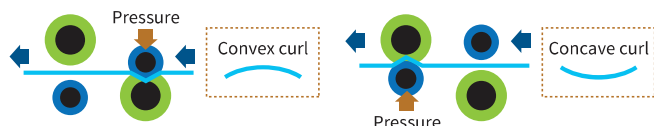
Front-to-back Registration

Based on feedback from two paper-position sensors located in the paper path, the MFP employs an image shift function to automatically adjust the position of printed images with respect to the edges of a page. This precise front-to-back registration ensures exact correspondence of the printed material, so that consistently high levels of quality can be achieved when producing leaflets, brochures, and other documents—including those with two-sided double-page spreads or those that are to be saddle stitched and trimmed. Users can also manually adjust vertical/horizontal ratio and position settings to achieve even more precise front-to-back registration.



Curl Correction Unit

The optional Curl Correction Unit uses top and bottom rollers to smooth out sheets during paper travel. This keeps the paper from warping before it goes to the finisher and contributes to fast, stable paper feeding.



Developer Cooling System

The MFP's developer unit employs a forced-air cooling system to prevent excessive heat build-up. This enables the unit to maintain consistent image quality, even in high-volume printing environments.



Line Width Adjustment

This function adjusts the width of lines. Fine lines, which are otherwise difficult to render properly, turn out sharp and crisp. Intricate line drawings, complex graphs and charts, and detailed spreadsheets are reproduced with exceptional quality and precision.

High-resolution Output

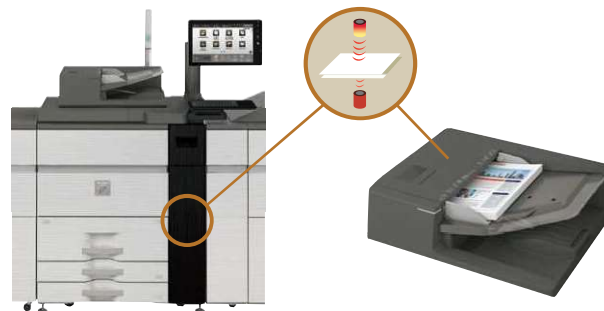
The MFP delivers razor-sharp 1,200 dpi copying and printing (600 dpi at default setting)—without sacrificing output speed. Fine-grained photographs, detailed illustrations and graphs, and small text all come out crisp and clear.

Highly Rigid Main Frame

A highly rigid support frame isolates and protects critical machine components in the MFP, ensuring increased durability and reliability. The unit can withstand heavy use in locations where rapid, high-volume output is demanded.

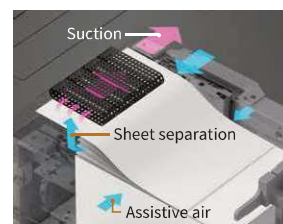
Multi-feed Detection System

A precision-engineered Multi-feed Detection System on the MFP employs ultrasonic technology to detect misfeeds in the DSPF and the paper feed section of the paper trays.



Air-feed System

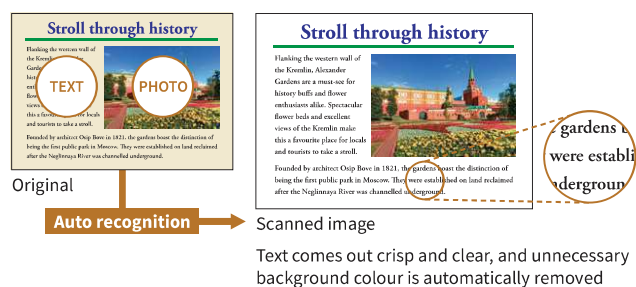
For smooth paper handling and travel, an air-feed system on the optional MX-LC13 N Large Capacity Trays minimises paper jams and the feeding of more than one sheet at a time.



Easy, High-quality Scanning

Through an advanced three-step process, **Auto Colour Mode** provides fully automated scanning in both colour and B/W—with a simple press of the Start button. Here's how it works: **Auto Colour Selection** automatically determines whether a page is colour or B/W. **Auto Original Type Selection** then analyses page contents to distinguish between different components (such as photos and text) and selects the appropriate mode. Finally, **Background Suppression** automatically removes unnecessary background colour.

Auto Colour Mode



Clear, Easily Visible Copies

Auto Original Type Selection and **Background Suppression** are just as effective for copying as they are for scanning. Copies of documents that have a colour background—for example, newspaper articles, flyers, or invoices—come out superbly clear and legible.

Productivity Boosters

Super-efficient Output

Built to meet the rigorous, high-volume demands of offices, copy rooms, CRD, and corporate data centers, this MFP delivers B/W copying and printing at the impressive speed of 120/105 ppm*. Advanced technology, integrated network scanning, and flexible configurations expedite job processing and streamline document workflow like never before. And to bring productivity and reliability where it's needed most, this high-volume workhorse boasts a 1 TB hard drive*² and 6 GB of standard memory.

*1: A4 (8 1/2" × 11"), long-edge feeding.

*2: HDD capacity depends on procurement and sourcing status.



Full Front Access

Particularly convenient during toner cartridge replacement, an unlikely paper jam, and other operations, full front access to all key machine components ensures easy maintenance—and maximum uptime.



Intermediate Toner Hopper for Continuous Runs

Thanks to an intermediate toner hopper, there's no need to stop the MFP during large-volume copy/print jobs when the toner cartridge needs changing. The MFP can use toner from the toner hopper to continue printing while the empty toner cartridge is replaced with a new one.



Printing continues during toner cartridge replacement

Large Paper Capacity

While the MFP holds a generous 3,100 sheets of paper, this capacity can be expanded to meet the needs of high-volume jobs. Adding an optional 500-sheet Multi Bypass Tray and two 5,000-sheet (2,500 x 2) Large Capacity Trays boost capacity to 13,500 sheets. And when a tray runs out of paper, the Auto Tray Switching function automatically switches to another tray with the same-sized paper.



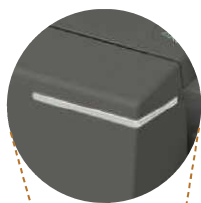
Smart Duplex Single Pass Feeder

The MFP features a highly efficient DSPF (duplex single pass feeder) that scans both pages of two-sided documents in one pass—in batches of up to 300 sheets. With scanning speeds of up to 120 opm* (one-sided) or 240 opm* (two-sided), the MFP is quick to finish even large jobs. The DSPF has smart document-feeding features that let you work more efficiently, along with other handy features that help keep your documents confidential.

* Originals per minute; when feeding A4 (8 1/2" × 11") sheets

LED Signal (ready to scan)

This LED signals that your document is placed correctly and is ready to scan.



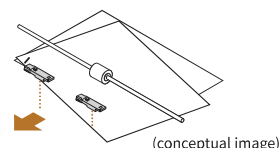
LED Alert (document retrieval)

This LED lights up and reminds you to retrieve your document after scanning.



Skewed-sheet Detection

Sensors detect sheets that are not fed in straight—for example, a loose page of a corner-stapled document. If this happens, the DSPF stops automatically.



See-through Tray

Part of the DSPF tray is see-through, making it easier to see your scanned documents.

Enhanced Flexibility

Versatile Paper Handling

- **Paper Sizes:** The MFP supports an extensive range of standard paper sizes from A5 to SRA3/A3W (5 1/2" × 8 1/2" to 12" × 18"), along with custom paper sizes up to 320 × 470 mm (12 1/2" × 18 1/2").
- **Paper Weights:** The MFP handles paper as thin as 52 g/m² and as thick as 300 g/m². Duplexing is possible for paper ranging from 52 g/m² to 220 g/m².
- **Paper Types:** In addition to plain paper, the MFP accommodates a number of other paper types, including coated or removable adhesive paper.

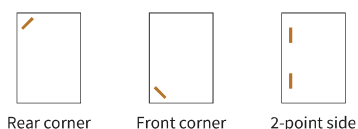


Professional-quality In-line Finishing Options

A range of finishing options work to automate time-consuming finishing tasks. Options are available to suit a variety of workplaces and applications.

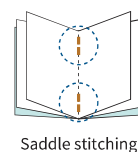
Stapling

With a maximum output capacity of 4,250 sheets, handy Finishers provide three stapling positions—front corner, rear corner, and two-point side—for up to 100 sheets per set.



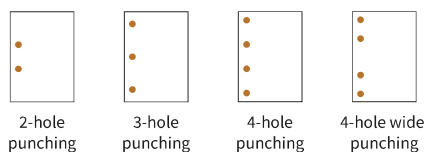
Saddle Stitching

The Saddle Stitch Finisher automatically staples and folds sets of documents up to 20 sheets. It's perfect for creating professional-looking booklets, pamphlets, and business proposals.



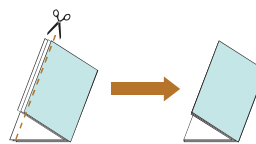
Punching

The Finishers can be equipped with four different kinds of optional punch modules. These allow you to punch two to four holes in a document.



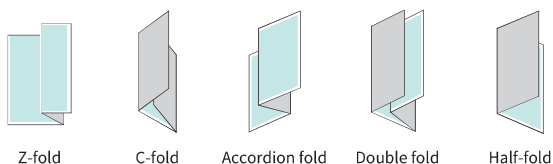
Trimming

For professional-looking booklets, the Saddle Stitch Finisher can be equipped with a Trimming Module that gives the edges of saddle-stitched documents a beautifully consistent finish.



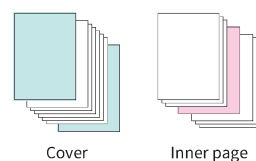
Folding

The MFP automates various types of folding, such as z-folding and c-folding, for efficient production of direct mail, brochures, and more.



Insertion

For truly professional results, the Inserter can add pre-printed covers and insert paper up to 220 g/m² to documents before final finishing. Two input trays, each with a capacity of 200 sheets, make it possible to feed in two different types of paper.



	MX-FN21 Finisher	MX-FN22 Saddle Stitch Finisher
Stapling	Yes	Yes
Saddle stitching	—	Yes
Punching ^{*1}	Yes	Yes
Trimming ^{*2}	—	Yes
Folding ^{*3}	Yes ^{*4}	Yes ^{*5}
Insertion ^{*6}	Yes	Yes

^{*1}: Requires optional MX-PN13 punch module.

^{*2}: Requires optional MX-TM10 trimming module.

^{*3}: Z-/half-fold pages are ejected from the finisher; C-/accordion-/double-fold pages from the folding unit.

^{*4}: Requires optional MX-FD10 folding unit.

^{*5}: Z-/C-/accordion-/double-fold requires optional MX-FD10 folding unit.

^{*6}: Requires optional MX-CF11 inserter.

Fiery® Server for Outstanding Quality and Efficiency

Paired with the MX-PE16, an industry-leading Fiery external server, this MFP becomes a powerful integrated solution for managing professional in-plant and busy on-demand printing environments. This winning combination offers the following benefits, to name just a few:

- Easily manage jobs with Fiery Command WorkStation™ fully integrated at the MFP's touchscreen for unmatched control and ease of use
- Deliver high-impact documents that maintain consistent results page after page
- Process large, complex jobs at speeds of 120/105 ppm that will exceed your expectations

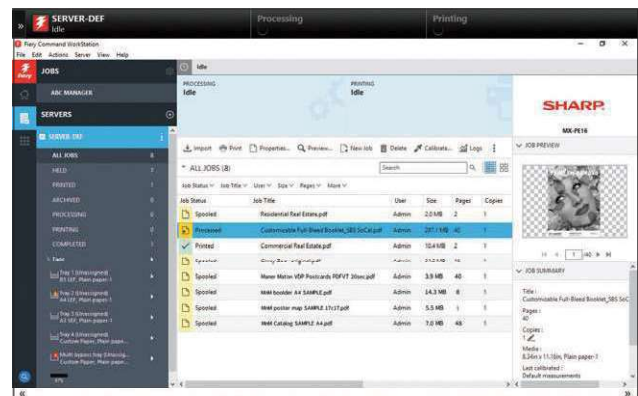


Centralised Control and Automated Management

The MX-PE16 Fiery Server offers a centralised solution that features the award-winning Fiery Command WorkStation with a de facto industry-standard print job management user interface. It's intuitively easy to preview jobs, check their progress, and do reprints. With the MX-PE16, Fiery Command WorkStation is fully integrated at the MFP's control panel. This allows you to monitor, control, and troubleshoot production directly from the touchscreen.



An optional touch pad (part of the MX-PX16 Fiery Interface Kit for the MX-PE16) allows you to control an on-screen mouse



Fiery Command WorkStation features a newly improved UI for a better user experience

Fiery Hot Folders

Fiery Hot Folders give you a quick, automated way to send files to a Fiery server using predefined settings. There's no need to input the same settings for repeat jobs or frequently used layouts. Just drag and drop print files into a Hot Folder and start printing. You can also share Hot Folders with other users on a network.

Streamlined Job Submission

With Fiery Impose™, you can see imposition changes as you make them and you can preview exactly how a document will look before you print it. This intuitive PDF-based sheet-imposition software boosts productivity by streamlining job submission from pre-press to finishing. It integrates with offline finishing equipment and applies finisher-specific job names, registration marks, and barcodes before processing raster images. Layout templates make it easy to create booklets with saddle stitching or C-folds. And finished jobs can be archived as PDF files for easy reprinting.

Adobe PDF Print Engine

The MX-PE16 employs Adobe PDF Print Engine (APPE) 5.3 rendering technology, which supports a native end-to-end workflow for PDFs. You can process and render PDF documents without converting them to PostScript. During PDF printing, APPE eliminates errors—even errors with transparency effects.

Efficient Variable Data Printing

Fiery FreeForm Create™ is a variable data creation application that makes it easy to quickly create personalised files. With its user-friendly drag-and-drop interface, you can easily add variable content—such as text, images, or barcodes—to existing files. It's ideal for mass-customised printing of mixed-media documents such as manuals, newsletters, business cards, and flyers. The MX-PE16 also supports other industry-leading VDP formats, such as PPML 3.0, PDF/VT-2, VPS, and VIPP.

Optimised Printing

Fiery JobExpert™ dynamically analyses incoming PDF files and chooses the optimal print settings for the highest image quality. In high-volume print environments, it helps you save time and process more jobs with fewer errors and less waste.

Integration with Third Party and Other EFI Solutions

The Fiery open platform also supports industry standards and seamlessly integrates with existing MIS environments, third-party vendors, and other EFI MIS solutions. The MX-PE16 also integrates with web-to-print software for fast, simple VDP job submission.

Smooth Operation

15.4-inch Colour LCD Touchscreen

Operating the MFP is easy and intuitive with the 15.4-inch colour LCD touchscreen. Just tap your dedicated user icon to access a personally customised operation screen. In Easy UI mode, the touchscreen displays simple icons for frequently used functions like duplexing and paper size selection. And with the Advanced Preview function, you can check document finishes, edit pages in advance, and more. For easy viewing, the control panel can be tilted from front to back and from side to side, and the arm, to which the control panel is attached, can be freely rotated from side to side to the user's desired angle.



QWERTY Keyboard (option)

Convenient for typing email addresses and messages, as well as passwords for user authentication, this full-size QWERTY keyboard makes text input fast and easy.



Paper Setting Registration

The MFP's Paper Setting Registration function allows instant recall of pre-registered media profiles. It stores up to 1,000 media profiles that include front-to-back registration settings, data on fusing temperature, and data on the type and weight of paper used. This allows identical, frequently executed jobs to be performed without the need to set the MFP each time, thereby helping to save time and ensure consistency from job to job.

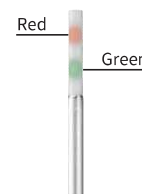
Administrator Machine Adjustments

A machine adjustment menu enables MFP administrators (i.e., trained print room managers) to access and configure machine set-up for a total of 40 items in three areas: image quality, image position/ratio/area, and peripherals. As there is no need to call for outside service staff when making MFP adjustments, machine downtime is reduced and productivity boosted.



Status Indicator (option)

The Status Indicator provides diagnostics via green and red LED lights that are clearly visible from a distance. The green light remains lit while a job is being executed and blinks while document data is being read. The red light blinks or lights up to indicate an error that may or may not prevent normal operation.



Office Direct Printing*

Print common Microsoft Office files without using a PC. With this MFP, you can print a Word, Excel, or PowerPoint file directly from a mobile device, cloud service, USB drive, or file server.

* The actual printout may look different from what is displayed on the computer screen. This function is enabled via Qualcomm® DirectOffice™ technology.

Print Release*

The Print Release function lets you send documents to the main MFP, which acts as a server and stores them for printing out from any other compatible MFP on the network. This function comes in handy when the main MFP is in use or under maintenance, letting you finish your job with minimal waiting.

* Contact a Sharp customer representative for details on the recommended maximum number of connectable MFPs.



Easy Connection

Link to Cloud Services*

The MFP connects with cloud services directly from its control panel, letting you upload scanned data to or print directly from any of them. Once you log in to the MFP, its single sign-on feature allows you to quickly access multiple software services without having to sign in to each one separately. You can also download and install apps on your MFP via Sharp's Application Portal. App updates are easily recognisable, so you'll always be up-to-date on the latest services.

* Requires optional MX-AMX2/AMX2L. Contact a Sharp customer representative for details.



Link with Mobile Devices

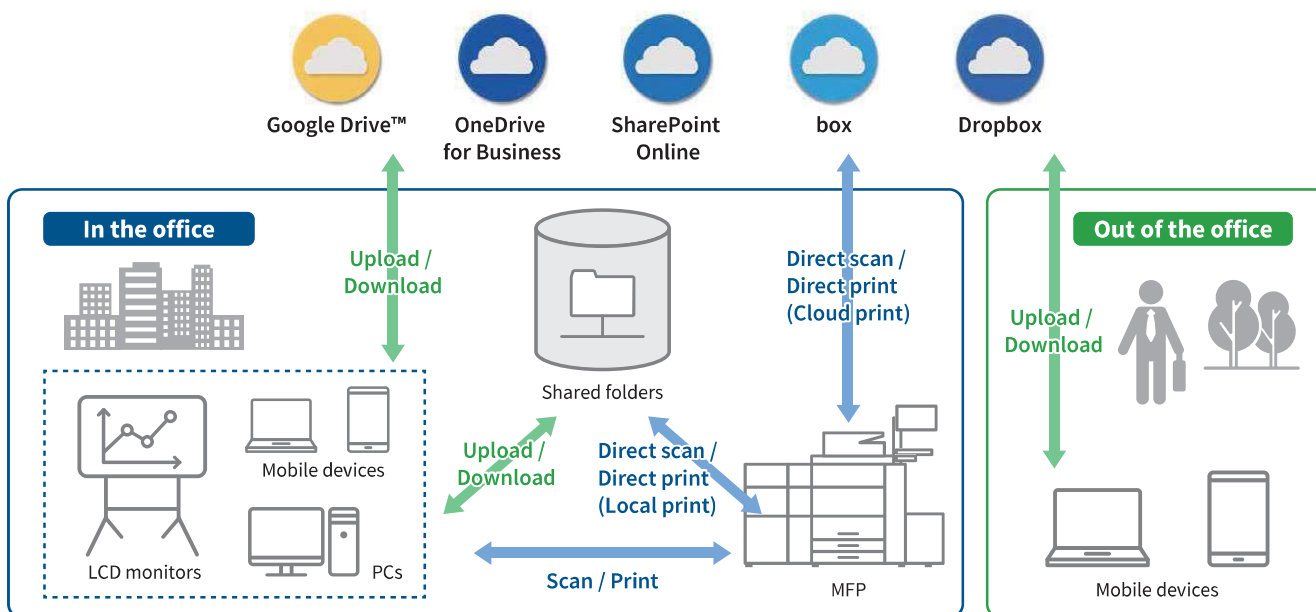
Connecting the MFP to one or more mobile devices is easy, and it expands your options for sharing data. Not only can you send scanned documents to mobile devices such as smartphones and tablets, you can also print documents or photos sent from those devices. The MFP supports the **AirPrint** mobile printing technology.

Link with Mail Servers

Scanned data can be conveniently sent via your regular Gmail™ or Microsoft Exchange/Online* account. Sending email is as easy as choosing a recipient from your address book on the mail server. Scanned data that you send can be stored on the mail server with other sent items.

* Exchange Server 2010/2013/2016/2019, Exchange Online

Public Cloud Services



Handy Scan Functions

Automated Scanner Settings*1

Using Auto Set, the MFP automatically determines scan resolution, skips blank pages, or reorients pages mixed in upside down. It can also distinguish colour and B/W documents. For text in B/W documents, it selects the optimal setting—monochrome or greyscale. And it automatically adjusts skewed documents*2, so you don't have to re-scan them.

*1: Easy UI mode only *2: PDF format only

Multicrop and Image Crop Functions

Multiple receipts, photos, and other items can be scanned at once, with each one saved as a separate file. The MFP can also crop photos from documents such as magazine pages and save them as individual files.

Business Card Management

A dedicated business card feeder on the DSPF scans batches of up to 150 cards. It reads the contact details on each card via OCR and then exports the details to your chosen contact management system.

Convert Documents via OCR

OCR lets you convert a scanned document into a searchable PDF file or editable Office Open XML file. This lets you search text quickly or copy and paste text data into other applications.

Multi-Layered Security

Network Security and Access Control

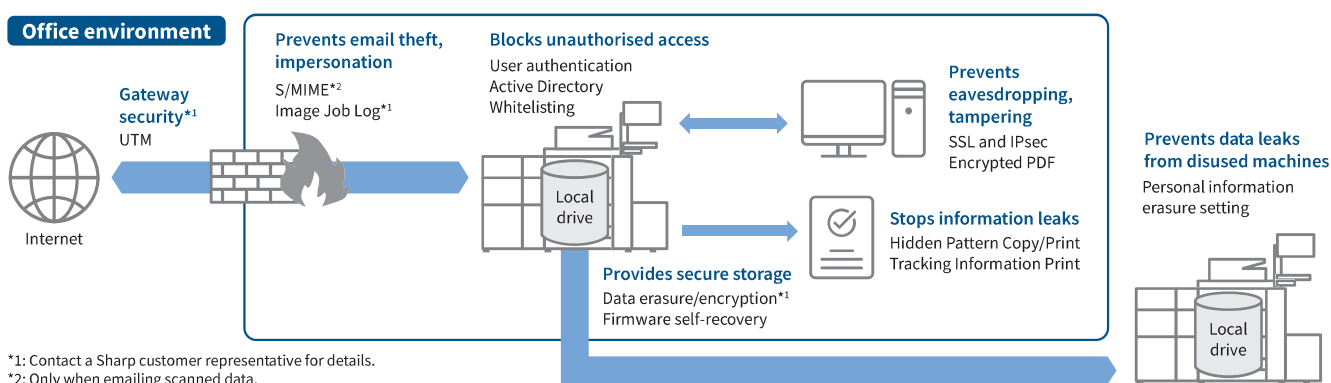
- **S/MIME** provides secure email communications*
* Only when emailing scanned data.
- **SSL** (secure sockets layer) and **IPsec** data encryption technologies ensure secure network communications
- **User Authentication** prevents unauthorised MFP use by requiring passwords
- **Active Directory** enables integrated management of user credentials, thereby providing a highly secure and efficient environment for system administrators
- **Whitelisting** protects the MFP from fraudulent programs trying to access the file system and obtain information
- **Image Job Log*** creates and externally stores an image file (PDF) and a log file (XML) for each job. This helps identify unauthorised use of the MFP.
* Contact a Sharp customer representative for details on activating this function.

Document Protection

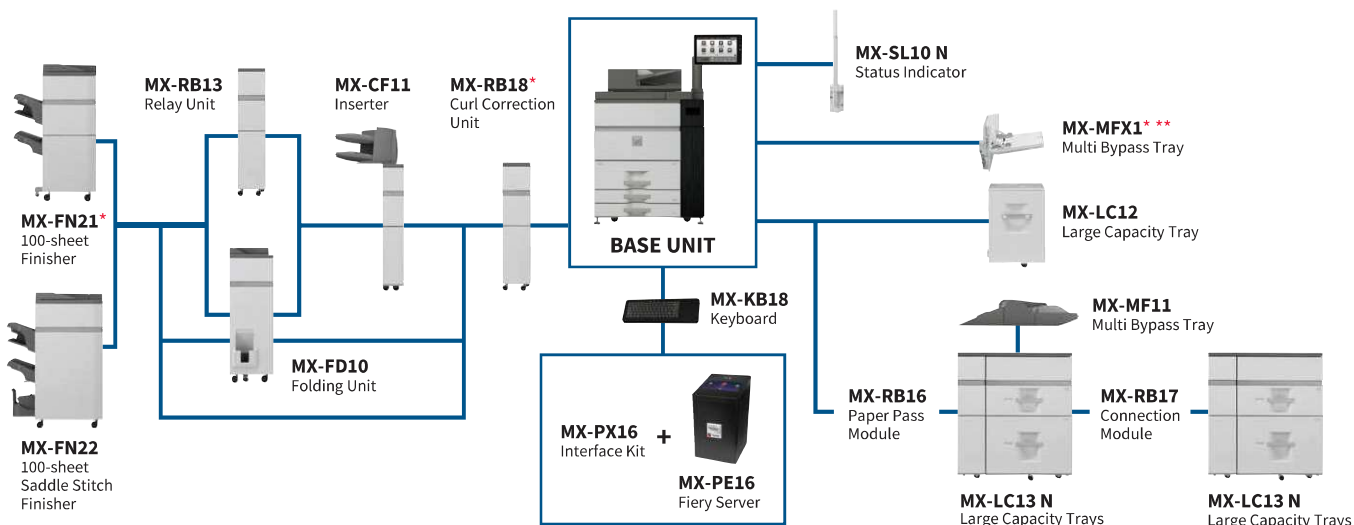
- **Document Control*** prevents unauthorised use of confidential documents by embedding copy prevention data in them
* Requires optional MX-FR66U. May not work with certain types of paper, documents (such as those with a large volume of photos), or MFP settings.
- **Hidden Pattern Copy/Print** embeds a watermark, such as “Confidential” or “Not for Copy,” onto a document

Data/System Protection

- Job data is automatically **encrypted*** before being saved to the MFP’s internal storage. Once a job is finished, its encrypted data is **erased*** by up to 10 automatic overwrites.
* Contact a Sharp customer representative for details on activating this function.
- Retained data can be **erased** when it’s time to replace the MFP, preventing the leakage of confidential information
- **Firmware self-recovery** prevents data leaks and firmware damage by automatically restoring files when abnormal activity is detected



System Configuration



MX-PN13A/B/C/D
Punch Module (for MX-FN21/22)

MX-TM10
Trimming Module (for MX-FN22)

MX-PF10/PF10L
Barcode Font Kit

MX-AMX1/AMX1L
Application Integration Module

MX-AMX2/AMX2L
Application Communication Module

MX-AMX3/AMX3L
External Account Module

MX-FR66U
Data Security Kit

* Minimum required equipment.

** Cannot be used with MX-RB16, MX-LC13 N, and MX-MF11.

Certain optional equipment may not be available in some areas.

Specifications for Optional Equipment

MX-FN21 Finisher

Paper size	Non offset	SRA3/A3W (12" x 18") to A5 (5 1/2" x 8 1/2")* ¹ Custom sizes up to 320 x 470 mm (12 1/2" x 18 1/2")
	Offset/staple	A3 (11" x 17") to B5* ² (8 1/2" x 11")
Paper weight	Non offset/offset	52 g/m ² to 300 g/m ² (13 lbs bond to 110 lbs cover)
	Staple	60 g/m ² to 300 g/m ² (16 lbs bond to 110 lbs cover)
Paper capacity	Upper tray	1,500 sheets (up to A4), 750 sheets (up to SRA3)
	Middle tray	250 sheets (up to A4), 125 sheets (up to A3), 30 sheets (up to SRA3)
	Lower tray	2,500 sheets (up to A4), 750 sheets (up to SRA3)
Stapling capacity* ³		100 sheets (A4, B5), 50 sheets (A3, B4, A4* ⁴)
Staple position		3 locations (front, rear, 2-point)
Power consumption (max.)		200 W, 350 W with MX-FD10
Power requirements		AC 230 V, 10 A
Dimensions	With tray stored	654 x 765 x 1,040 mm (W x D x H)
	With tray extended	782 x 765 x 1,040 mm (W x D x H)
Weight (approx.)		61 kg

MX-FN22 Saddle Stitch Finisher

Paper size	Non offset	SRA3/A3W (12" x 18") to A5 (5 1/2" x 8 1/2")* ¹ Custom sizes up to 320 x 470 mm (12 1/2" x 18 1/2")
	Offset/staple	A3 (11" x 17") to B5* ² (8 1/2" x 11")
	Saddle stitch/folding	SRA3/A3W (12"x 18") to A4 (8 1/2" x 11")* ⁵
Paper weight	Non offset/offset	52 g/m ² to 300 g/m ² (13 lbs bond to 110 lbs cover)
	Staple/saddle stitch* ⁶	60 g/m ² to 300 g/m ² (16 lbs bond to 110 lbs cover)
	Folding	60 g/m ² to 220 g/m ² (16 lbs bond to 80 lbs cover)
Paper capacity	Upper tray	1,500 sheets (up to A4), 750 sheets (up to SRA3)
	Middle tray	250 sheets (up to A4), 125 sheets (up to A3), 30 sheets (up to SRA3)
	Lower tray	2,500 sheets (up to A4), 750 sheets (up to SRA3)
	Saddle stitch tray	1–5 sheets: 25 sets, 6–10 sheets: 15 sets, 11–15 sheets: 10 sets, 16–20 sheets: 5 sets
Stapling capacity* ³		100 sheets (A4, B5), 50 sheets (A3, B4, A4* ⁴)
Staple position		3 locations (front, rear, 2-point)
Power consumption (max.)		200 W, 350 W with MX-FD10
Power requirements		AC 230 V, 10 A
Dimensions	With tray stored	767 x 765 x 1,040 mm (W x D x H)
	With tray extended	896 x 765 x 1,040 mm (W x D x H)
Weight (approx.)		108 kg

MX-TM10 Trimming Module (for MX-FN22)

Paper size	SRA3/A3W (12"x 18") to A4 (8 1/2" x 11")* ⁵ Custom sizes up to 320 x 470 mm (12 1/2" x 18 1/2")
Paper weight	60 g/m ² to 300 g/m ² (16 lbs bond to 110 lbs cover)
Acceptable number of sheets* ⁶	2–20 sheets (60 g/m ² to 81.4 g/m ²), 2–10 sheets (more than 81.4 g/m ² to 105 g/m ²), 2–3 sheets (more than 105 g/m ² to 220 g/m ²)
Trim width	2 mm to 20 mm in 0.1 mm increments
Power requirements	Powered by MX-FN22 Finisher
Weight (approx.)	32 kg

Punch Modules (for MX-FN21/FN22)

Model name	MX-PN13A	MX-PN13B	MX-PN13C	MX-PN13D
Number of holes	2	3/2	4/2	4 (wide)
Paper weight	52 to 256 g/m ²			
Power requirements	Powered by MX-FN21/FN22 Finisher			

MX-FD10 Folding Unit

Folding mode	Z-fold, C-fold, Accordion-fold, Double-fold, Half-fold
Paper size	Z-fold* ⁷ C-/Accordion-/Double/ Half* ⁷ -fold
	A3 (11" x 17") to A4 (8 1/2" x 11")* ⁵ A4 (8 1/2" x 11")* ⁵
Paper capacity	Z-fold* ⁷ Half-fold* ⁷ C-/Accordion-fold Double-fold
	30 sheets (up to A3), 10 sheets (A4* ⁴) 10 sheets (A4* ⁴) 40 sheets (A4* ⁴) 25 sheets (A4* ⁴)
Paper weight	52 g/m ² to 105 g/m ² (13 lbs bond to 28 lbs bond)
Power requirements	Powered by MX-FN21/FN22 Finisher
Dimensions	336 x 793 x 1,050 mm (W x D x H)
Weight (approx.)	66 kg

MX-RB18 Curl Correction Unit

Paper size	SRA3/A3W (12" x 18") to A5 (5 1/2" x 8 1/2")* ¹ Custom sizes up to 320 x 470 mm (12 1/2" x 18 1/2")
Paper weight	52 g/m ² to 300 g/m ² (13 lbs bond to 110 lbs cover)
Power requirements	Supplied by main unit
Dimensions	214 x 760 x 986 mm (W x D x H)
Weight (approx.)	19 kg

MX-CF11 Inserter

Paper size	SRA3/A3W (12" x 18") to A5 (5 1/2" x 8 1/2")* ¹ Custom sizes up to 320 x 470 mm (12 1/2" x 18 1/2")
Paper weight	60 g/m ² to 220 g/m ² (16 lbs bond to 80 lbs cover)
Paper capacity	Upper/lower tray
Power requirements	200 sheets/each
Dimensions	With tray stored
	With tray extended
Weight (approx.)	45 kg

MX-MFX1 Multi Bypass Tray

Paper size	A3W (12" x 18") to A5 (5 1/2" x 8 1/2")* ¹
Paper weight	52 g/m ² to 300 g/m ² (13 lbs bond to 110 lbs cover)
Paper capacity	100 sheets
Power requirements	Supplied by main unit
Dimensions	With tray stored
	With tray extended
Weight (approx.)	7.5 kg

MX-MF11 Multi Bypass Tray (for MX-LC13 N)

Paper size	SRA3/A3W (12" x 18") to A5 (5 1/2" x 8 1/2")* ¹ Custom sizes up to 320 x 470 mm (12 1/2" x 18 1/2")
Paper weight	52 g/m ² to 220 g/m ² (13 lbs bond to 80 lbs cover)
Paper capacity	500 sheets
Power requirements	Powered by MX-LC13 N Large Capacity Trays
Dimensions	With tray stored
	With tray extended
Weight (approx.)	18 kg

MX-LC12 Large Capacity Tray

Paper size	A4, B5 (8 1/2" x 11")* ⁸
Paper weight	60 g/m ² to 220 g/m ² (16 lbs bond to 80 lbs cover)
Paper capacity	3,500 sheets
Power requirements	Supplied by main unit
Dimensions	376 x 576 x 524 mm (W x D x H)
Weight (approx.)	29 kg

MX-LC13 N Large Capacity Trays

Paper size	SRA3/A3W (12" x 18") to B5 (7 1/4" x 10 1/2") Custom sizes up to 320 x 470 mm (12 1/2" x 18 1/2")
Paper weight	52 g/m ² to 300 g/m ² (13 lbs bond to 110 lbs cover)
Paper capacity	Upper/lower tray
Power consumption (max.)	2,500 sheets/each
Power requirements	900 W
Dimensions	AC 230 V, 10 A
	895 x 763 x 986 mm (W x D x H)
Weight (approx.)	131 kg

*1: Only short-edge feeding can be used with A5 (5 1/2" x 8 1/2") paper.

*2: Only long-edge feeding can be used with B5 paper.

*3: Using 80 g/m² paper, can include back and front covers (total of 2 sheets) of heaviest paper that can be stapled.

*4: Short-edge feeding.

*5: Only short-edge feeding can be used with A4 (8 1/2" x 11") paper.

*6: Using 80 g/m² paper, can include a single cover sheet of 300 g/m² or less.

*7: Z-fold and half-fold pages are ejected from the finisher (MX-FN21/FN22).

*8: Only long-edge feeding can be used with A4 and B5 (8 1/2" x 11") paper.

Note: All specifications relating to paper capacity refer to 80 g/m² paper.

SPECIFICATIONS

General

Type	Console
Engine speed	A4 (8 1/2" x 11") ^{*1} : Max. 120/105 ppm A3 (11" x 17") [*] : Max. 54/52 ppm SRA3: Max. 52/49 ppm
Control panel display	15.4-inch colour LCD touchscreen
Paper size	Max. SRA3/A3W (12" x 18"), min. A5 (5 1/2" x 8 1/2") ^{*2}
Paper capacity (80 g/m ²)	Standard: 3,100 sheets ^{*3} (1,200-sheet tray, 800-sheet tray, 500-sheet tray x 2, and optional 100-sheet multi bypass tray) Maximum: 13,500 sheets (3,000 sheets & optional 2 x 2,500-sheet tray x 2 and 500-sheet multi bypass tray)
Paper weight	Tray 1&2: 60 g/m ² to 105 g/m ² (16 lbs bond to 28 lbs bond) Tray 3&4: 60 g/m ² to 220 g/m ² (16 lbs bond to 80 lbs cover) Multi bypass tray: [MX-MFX1] 52 g/m ² to 300 g/m ² (13 lbs bond to 110 lbs cover) [MX-MF11] 52 g/m ² to 220 g/m ² (13 lbs bond to 80 lbs cover) Large capacity tray: [MX-LC12] 60 g/m ² to 220 g/m ² (16 lbs bond to 80 lbs cover) [MX-LC13 N] 52 g/m ² to 300 g/m ² (13 lbs bond to 110 lbs cover) 200 sec. ^{*5}
Warm-up time ^{*4}	
Memory	6 GB (copy/print shared) 1 TB HDD ^{*6}
Power requirements	AC 220 V to 240 V, 13 A, 50/60 Hz
Power consumption (max.)	Max. 2.99 kW (220 V to 240 V)
Dimensions (W x D x H) ^{*7}	1,099 x 775 x 1,529 mm (43 9/32" x 30 33/64" x 60 13/64")
Weight (approx.)	276 kg (608.5 lbs)

Copier

Original paper size	Max. A3 (11" x 17")
First copy time ^{*8}	3.2 sec.
Continuous copy	Max. 9,999 copies
Resolution	Scan: 600 x 600 dpi, 600 x 400 dpi Print: 1,200 x 1,200 dpi, 600 x 600 dpi
Gradation	Equivalent to 256 levels
Zoom range	25% to 400% (25% to 200% using DSPF) in 1% increments
Preset copy ratios	Metric: 10 ratios (5R/5E), inch: 8 ratios (4R/4E)

Scanner

Scan method	Push scan (via control panel) Pull scan (TWAIN-compliant application)
Scan speed ^{*9} (colour & B/W)	One-sided: Max. 120 originals/min. Two-sided: Max. 240 originals/min.
Resolution	Push scan: 100, 150, 200, 300, 400, 600 dpi Pull scan: 75, 100, 150, 200, 300, 400, 600 dpi 50 dpi to 9,600 dpi via user setting ^{*10}
File formats	TIFF, PDF, PDF/A-1a, PDF/A-1b, encrypted PDF, XPS, compact PDF ^{*11} , JPEG ^{*12} , searchable PDF, OOXML (pptx, xlsx, docx), text (TXT [UTF-8]), rich text (RTF)
Scan destinations	Scan to email/desktop ^{*13} /FTP server/network folder (SMB)/USB drive/local drive

Document Filing

Document filing capacity ^{*13}	Main and custom folders: 35,000 pages or 5,000 files Quick file folder: 10,000 pages or 1,000 files
Stored jobs	Copy, print, scan
Storage folders	Quick file folder, main folder, custom folder (max. 1,000 folders)

Printer

Resolution	1,200 x 1,200 dpi, 600 x 600 dpi
Interface	USB 2.0 (host, high-speed), 10Base-T/100Base-TX/1000Base-T
Supported OS	Windows Server 2012, Windows Server 2012 R2, Windows Server 2016, Windows Server 2019, Windows Server 2022, Windows 8.1, Windows 10, Windows 11, Mac OS 10.9, 10.10, 10.11, 10.12, 10.13, 10.14, 10.15, 11, 12, 13, 14
Network protocols	TCP/IP
Printing protocols	LPR, Raw TCP (port 9100), POP3 (email printing), HTTP, FTP for downloading print files, IPP, SMB, WSD
PDL	PCL 6 emulation, Adobe PostScript 3
Available fonts	80 fonts for PCL, 139 fonts for Adobe PostScript 3

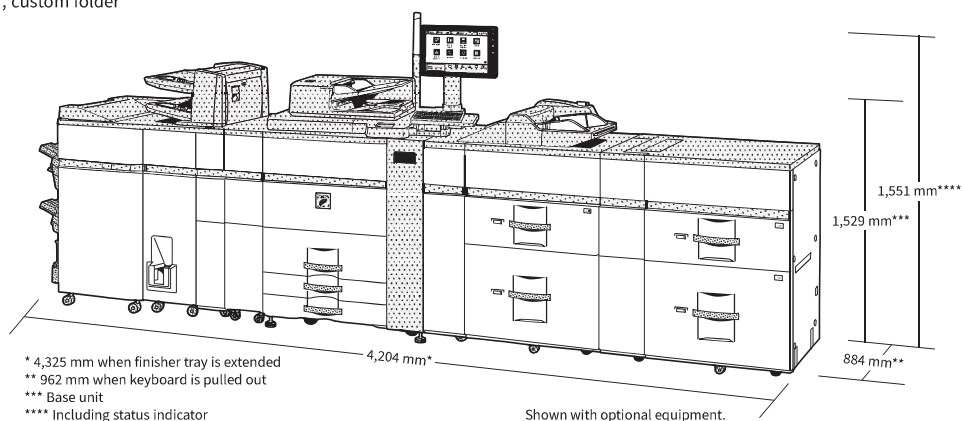
Fiery® Server (requires optional MX-PE16, MX-PX16, and MX-KB18)

Type	External server
System software	Fiery FS400 Pro
Operating system	Windows 10
CPU	Intel® Pentium® G5400, 3.7 GHz
Memory	8 GB DDR SDRAM 500 GB HDD
Resolution	1,200 x 1,200 dpi, 600 x 600 dpi (PS, PCL)
Supported OS	Windows Server 2016, Windows Server 2019, Windows Server 2022, Windows 8.1 ^{*14} , Windows 10, Windows 11, Mac OS 10.14, 10.15, 11, 12, 13, 14
Network protocols	TCP/IP, LDAP, IPX iPrint
Interface	Gigabit Ethernet
Printing protocols	LPD, PAP, SMB, port 9100, IPP, FTP printing, email print, WSD
PDL	Adobe PostScript 3
Available fonts	138 fonts for Adobe PostScript 3
Power requirements	AC 100 V to 240 V, 50/60 HZ
Power consumption	Max. 150 W
Dimensions (W x D x H)	248 x 204 x 384 mm (9 49/64" x 8 3/64" x 15 1/8")
Weight (approx.)	5.9 kg (13.0 lbs)

*1: Long-edge feeding. *2: Only short-edge feeding can be used with A5 (5 1/2" x 8 1/2") paper. *3: Paper capacity on minimum configuration. *4: In a standard measurement environment. May vary depending on operating conditions and environment. *5: When starting the MFP via the power button. 213 seconds when starting via the main power switch. *6: HDD capacity depends on procurement and sourcing status. *7: Including adjusters and protuberances. *8: Long-edge feeding of A4 (8 1/2" x 11") sheets from 2nd paper tray, using document glass, MFP in fully ready condition. May vary depending on operating conditions and environment. *9: Based on Sharp's A4 standard chart, using document feeder, long-edge feeding, and factory default settings. Scan speed will vary depending on the type of document and the scan settings. *10: Resolution will vary depending on the size of the scanned area. *11: Colour/greyscale only. *12: Requires Network Scanner Tool Lite. *13: Storage capacity will vary depending on the type of document and the scan settings. *14: For printer driver only.

• Design and specifications are subject to change without prior notice.
• Fiery, the Fiery logo, Command WorkStation, FreeForm Create, Fiery Impose, and Fiery JobExpert are trademarks or registered trademarks of Fiery, LLC. Adobe and PostScript are either registered trademarks or trademarks of Adobe in the US and/or other countries. Microsoft, Active Directory, Excel, OneDrive, PowerPoint, SharePoint, Windows, and Windows Server are trademarks of the Microsoft group of companies. AirPrint and Mac are trademarks of Apple Inc., registered in the US and other countries. Gmail and Google Drive are trademarks of Google LLC. Box is a trademark, service mark, or registered trademark of Box, Inc. Dropbox is a trademark or registered trademark of Dropbox, Inc. Intel and Pentium are trademarks of Intel Corporation or its subsidiaries in the US and/or other countries. Qualcomm DirectOffice is a product of Qualcomm Technologies, Inc. and/or its subsidiaries. Qualcomm is a trademark of Qualcomm Incorporated, registered in the US and other countries. DirectOffice is a trademark of CSR Imaging US, LP, registered in the US and other countries. All other brand names and product names may be trademarks or registered trademarks of their respective owners.

Qualcomm® DirectOffice™



* 4,325 mm when finisher tray is extended
** 962 mm when keyboard is pulled out
*** Base unit
**** Including status indicator

Shown with optional equipment.

SHARP

SHARP ELECTRONICS (VIETNAM) COMPANY LIMITED.

T5-B03.07 & T5-B03.09, 3rd Floor Masteri Thao Dien,
No. 159, Vo Nguyen Giap Street, Thao Dien city, Ho Chi Minh city
Website: vn.sharp Hotline: 1-800-1594
Service email: sbs-service@svn.sharp-world.com

Scan QR
to connect
Zalo OA

